

# GELA applied GRADE-ADOLOPMENT for priority national child health guidelines in South Africa, Malawi and Nigeria: What did we learn?

Michael McCaul, Amanda Brand, Emmanuel Effa, Nyanyiwe Masingi Mbeye,  
Tamara Kredo, Celeste Naude



Horizon2020  
European Union Funding  
for Research & Innovation

# Declaration of Conflict of Interest

No conflicts of interest.

The GELA project is funded by the EDCTP2 programme (grant number RIA2020S-3303-GELA) which is supported by the European Union. The funder had no role in the design of the study, or in the collection, analysis, and interpretation of data, or in writing the manuscript.

MM, CN, AB & TK are partly supported by the Research, Evidence and Development Initiative (READ-It). READ-It (project number 300342-104) is funded by UK aid from the UK government; however, the views expressed do not necessarily reflect the UK government's official policies.

Member - South African EDL/PHC ERC & NEMLC(NDoH)

Member SA GRADE Network & GRADE WG

Associate editor – Clinical and Public Health Guidelines

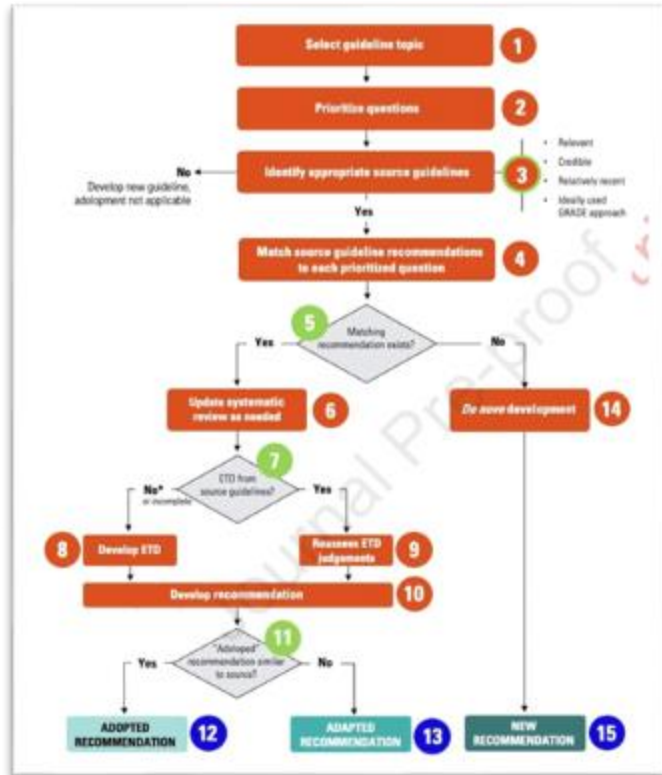
# Introduction

**Global Evidence-Local Adaptation (GELA) project** - aimed to develop locally relevant guideline recommendations for child health in Malawi, Nigeria, South Africa, using existing guidelines or syntheses to improve efficiencies

Underpinned by  
GRADE-ADOLOPMENT:

Tailored and  
fit-for-purpose:

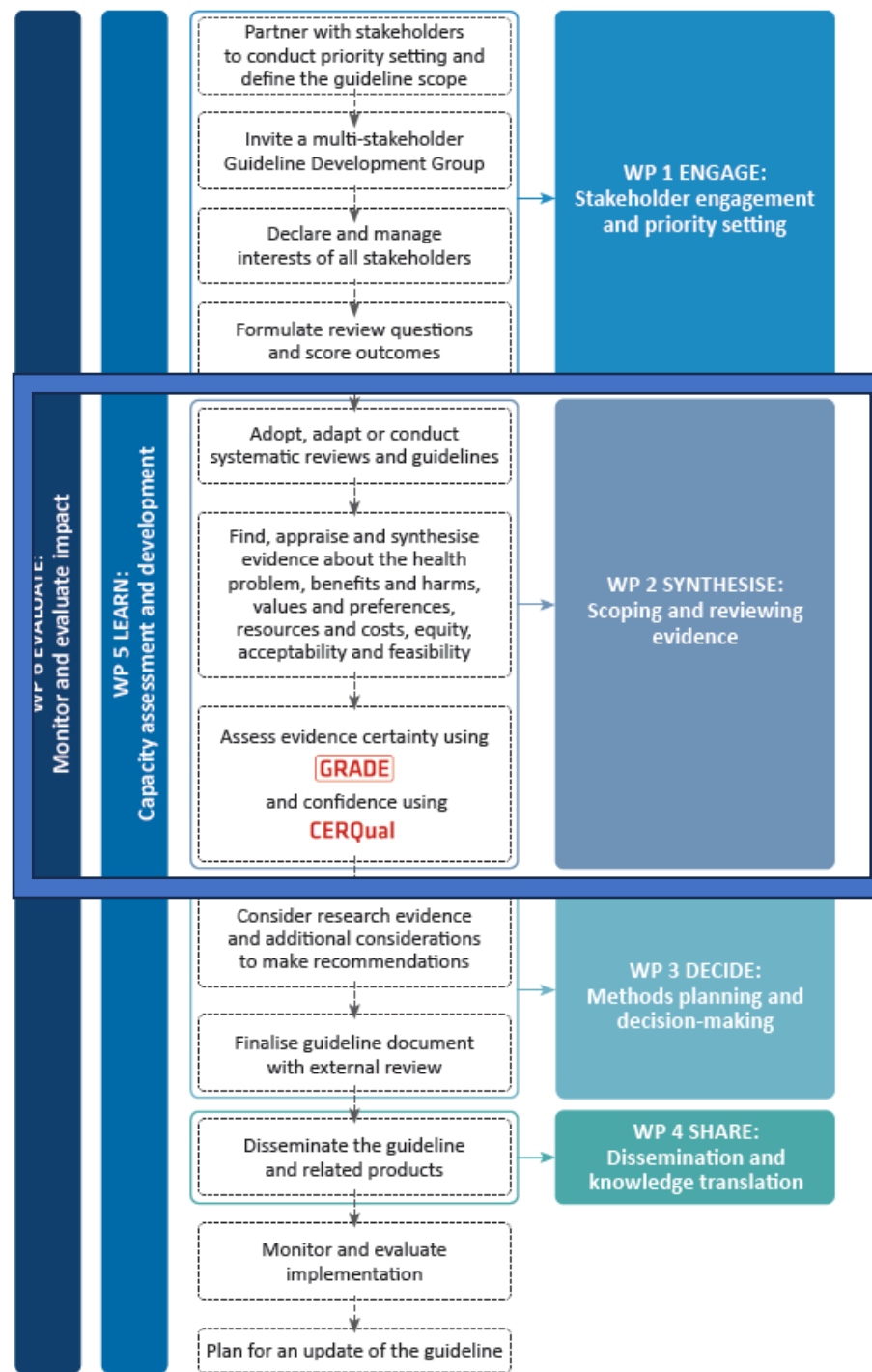
What did we need?



- ① Consistency, reproducibility, transparency
- ② Efficient use of limited resources/time
- ③ Navigate decision-making complexities
- ④ Build capacity in guideline adaptation



What did we learn when applying the GRADE-ADOLOPMENT methodology in LMIC settings?



Tailored and expanded GRADE-ADOLOPMENT algorithm through:

1. GELA working groups
2. Partner meetings
3. Project presentations

How?

= Approach / Design

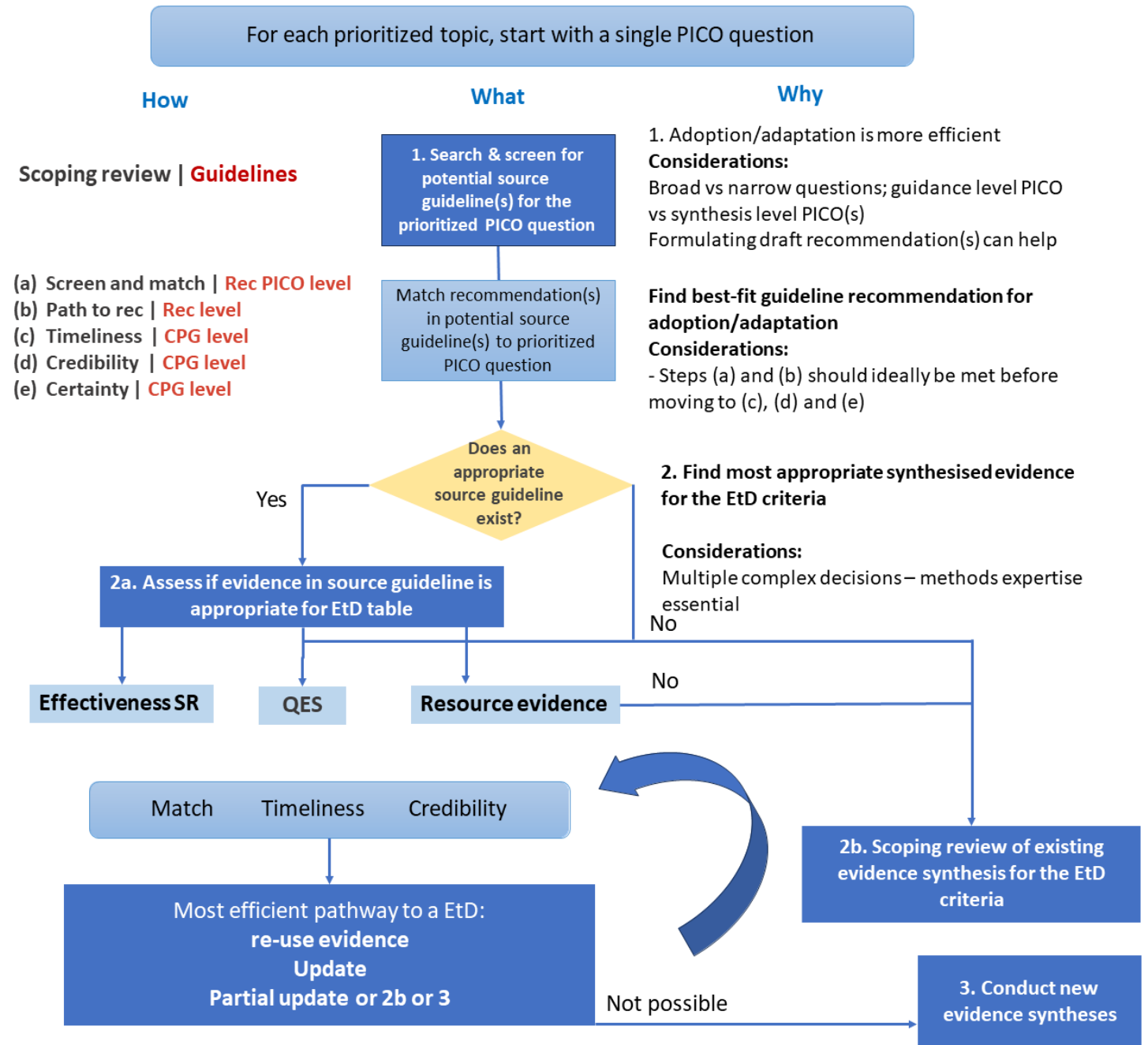
What?

= Decision paths & nodes

Why?

= Purpose / context

# Prototype GELA- adoloPMENT algorithm



Adapted from GRADE-ADOLPMENT algorithm

# Key adaptation issues and lessons

Maturity and relationships between **researchers** (supply) and **decision-makers** (demand)

Buy-in and partnerships

Navigating **guideline infrastructure**  
Local evidence **champions**  
Investment in **training**  
Partnering and **co-creating**

Global standards and **complexity** in guideline adaptation

Responsive and adaptive

Tiered approaches and **'best bet'** guidelines  
Experienced topic and methods **leadership**  
Targeted training with **'learning-by-doing'** in synthesis and guideline development (foundational)

Future investment

Adaptation can still be time and resource **intensive**  
GRADE: steep **learning curves**  
Long-term investment in **decision making capacity + infrastructure**

# Conclusion

GRADE-ADOLOPMENT is an EtD framework centric approach that facilitates and requires:

- **Flexibility** when implemented in emerging evidence-into-policy settings
- **Cross-country evidence-support** collaboration and **capacity development** – pivotal for a domestic EBDM culture
- **Contextualisation** of local evidence, strengthening national decision making and collaboration between synthesis team, decision makers and relevant stakeholders

Developing fit-for purpose child health guideline recommendations for each country requires considerable resources and time as local evidence is not always readily available or up-to-date and new evidence is often needed to support context-relevant guideline processes

# Thanks

This project is part of the EDCTP2 programme supported by the European Union



EDCTP



Tel: + 27 21 938 0508

Email: [gela@mrc.ac.za](mailto:gela@mrc.ac.za)

Facebook: [Global Evidence Local Adaptation](#)

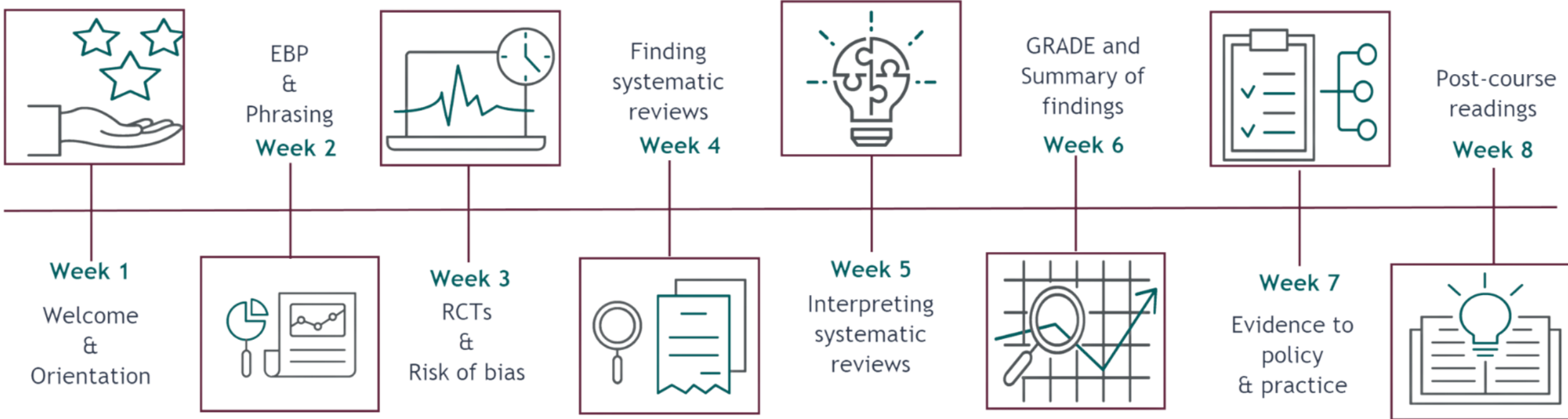
YouTube: [@GELAchild](#)

X: [@CochraneAfrica](#)





# Capacity Building Activities



# Capacity Building Activities

Capacity building activity	Target audience	Format
Primer in Systematic Reviews short course	Guideline group members and Steering group members from Malawi, Nigeria and South Africa	8-week, online short course that includes self-study and weekly, synchronous Q&A sessions Offered twice per year
WHO Guideline Simulation workshop	GDG members and Steering group committee members from all GELA partners	Half to full day, in-person workshop in respective countries Offered once in each country
Bespoke training workshops, including in qualitative evidence synthesis, software-specific training, user-testing, observational research and the TRANSFER stakeholder engagement approach	GELA researchers from all GELA partners	1-2 hour online training across countries  Offered as needed
Clinical Practice Guidelines short course, Stellenbosch University	GELA researchers from all GELA partners	Semester long, Master's-level online short course that comprises self-study, synchronous presentations, discussions and assessments  Offered once a year
GELA community of Practice	GDG members, Steering group committee members, GELA researchers from all GELA partners	WhatsApp group for informal discussions, quarterly online meetings with structured topics and discussions
Learning-by-doing / experiential learning	GELA researchers and decision-makers from all GELA partners	Hands-on experience, 'on the job' training, mentorship

# Prototype GELA-adolopment algorithm

For each prioritized topic, start with a single PICO question

## How

Scoping review | **Guidelines**

- (a) Screen and match | **Rec PICO level**
- (b) Path to rec | **Rec level**
- (c) Timeliness | **CPG level**
- (d) Credibility | **CPG level**
- (e) Certainty | **CPG level**

## What

1. Search & screen for potential source guideline(s) for the prioritized PICO question

Match recommendation(s) in potential source guideline(s) to prioritized PICO question

Does an appropriate source guideline exist?

## Why

1. Adoption/adaptation is more efficient

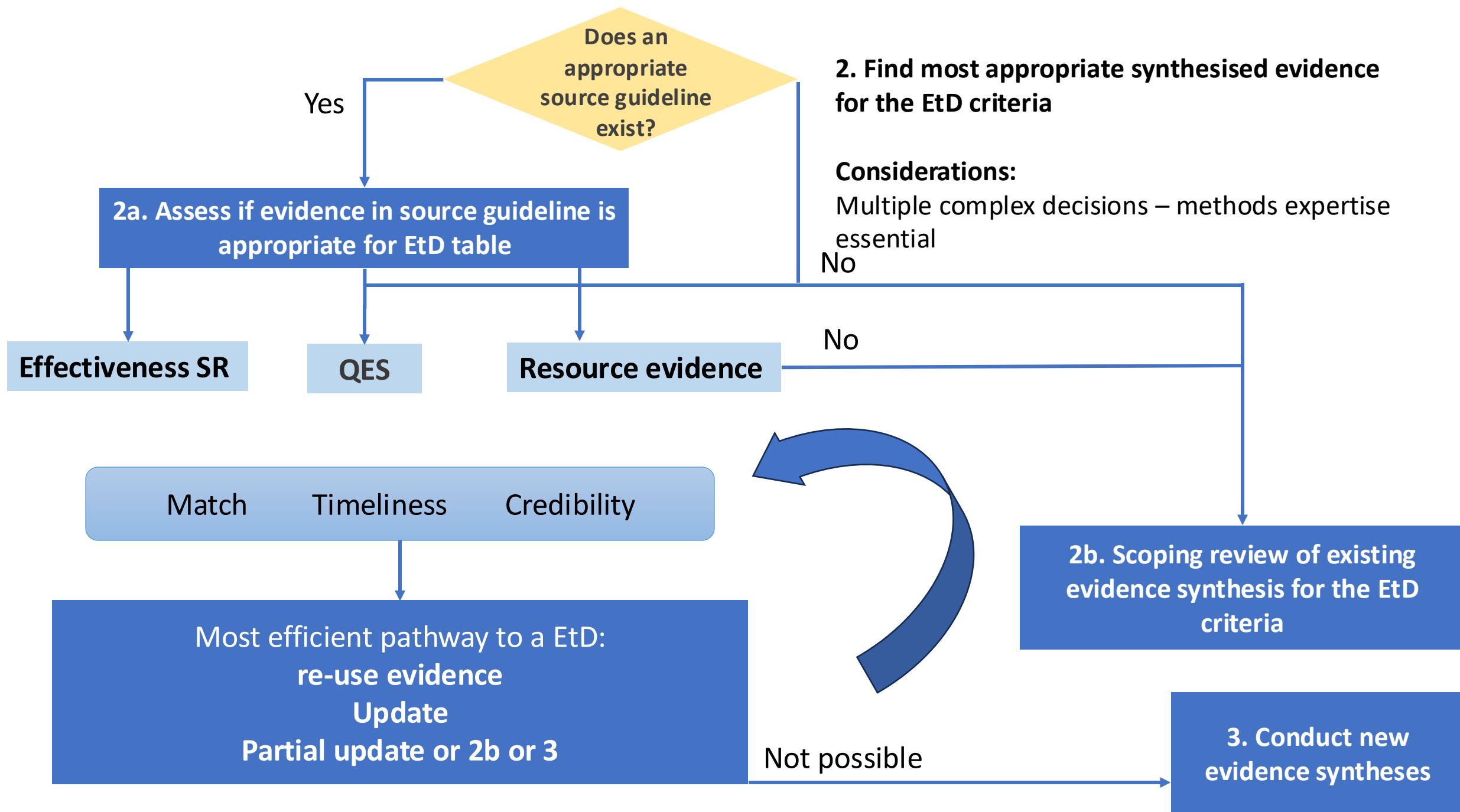
### Considerations:

Broad vs narrow questions; guidance level PICO vs synthesis level PICO(s)  
Formulating draft recommendation(s) can help

**Find best-fit guideline recommendation for adoption/adaptation**

### Considerations:

- Steps (a) and (b) should ideally be met before moving to (c), (d) and (e)



# Want to hear more about the GELA project?



Nyanyiwe Mbeye

Global evidence and local adaptation – lessons from Malawi of a guideline development and adaptation process

**OS: Bridging Global Evidence to Local impact, Especially in Low- and Middle- Income Countries**

**10 September**

**16h00 – 17h30 (Presenting at 17h02)**

**Hall D7**



Amanda Brand

Fit-for-use evidence on benefits and harms when adopting guidelines: the complexities of decisions to use, update or do new reviews

**OS: Guideline Development Strategies 1**

**10 September**

**16h00 – 17h30 (Presenting at 16h05)**

**Hall C3**