



This project is part of the EDCTP2 programme supported by the European Union



EDCTP

Reflections and lessons from a guideline adaptation project in Malawi, Nigeria and South Africa

Tamara Kredo, on behalf of GELA project team

WHO Special session
Global Evidence Summit,
10 September 2024



Declarations

I have no actual or potential conflict of interest in relation to this presentation.

This project is part of the EDCTP2 programme supported by the European Union

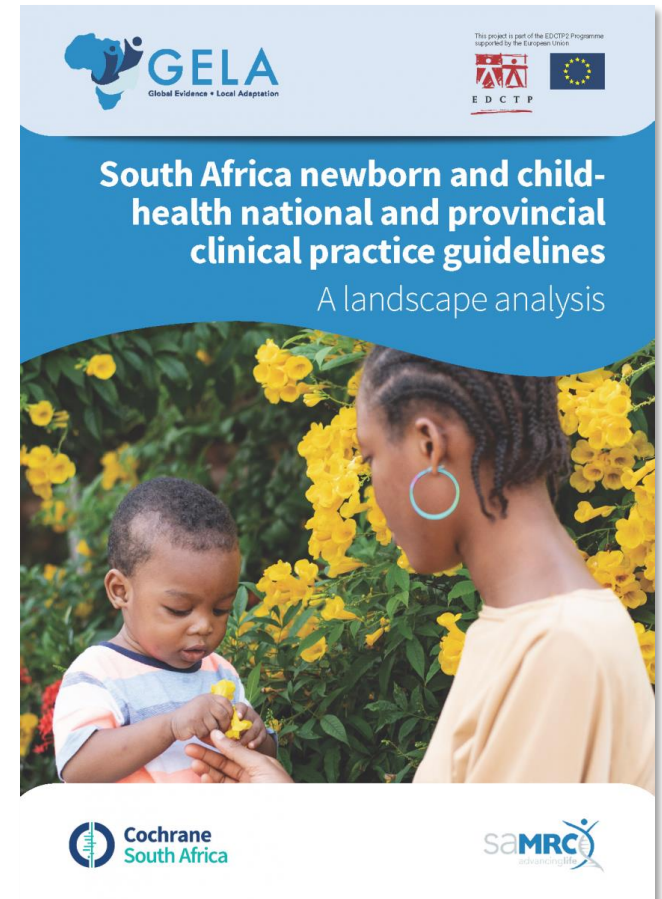


EDCTP

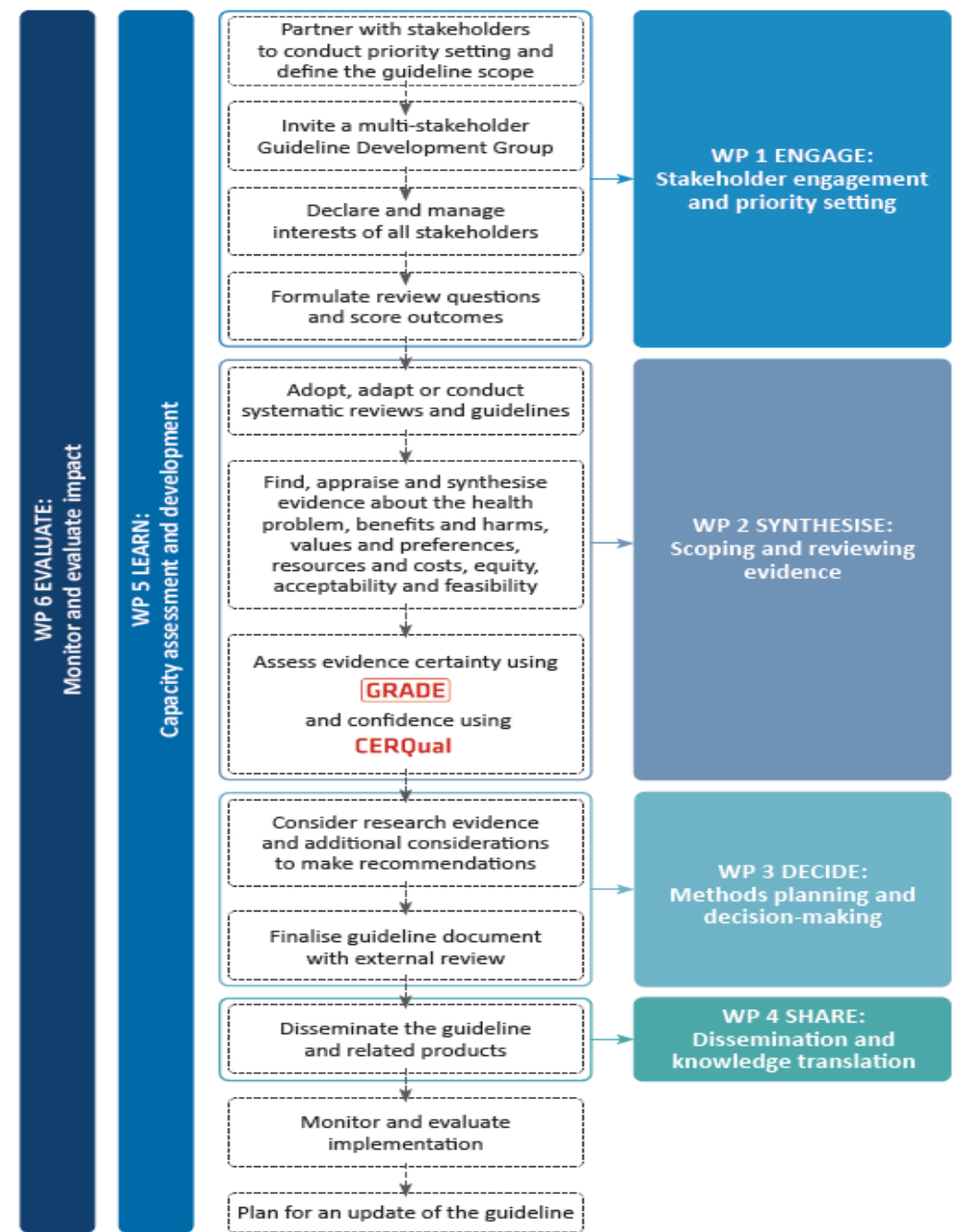
This project is funded as part of the EDCTP2 programme supported by the European Union (grant number RIA2020S-3303-GELA). The views and opinions of the authors expressed herein do not necessarily state or reflect those of EDCTP.

Problem

- Many national child health guidelines in Malawi, Nigeria and South Africa:
 - outdated
 - score poorly on rigorous methods
- Many are adapted from WHO, UNICEF – but none stated that explicitly



➤ GELA project approach



GELA Guideline Groups



What we did?

- Partnerships, avoiding duplication, waste
- Despite finding good guidelines, in most cases, additional evidence was required
- Invest in contextual evidence - health economists, social scientists
- Formal learning and on-the-job learning in evidence-informed decision-making.

Reflections - Sustainable national evidence informed decision-making

- **Developing context-relevant recommendations requires resources and time.**
- **WHO-guidance needs further methods work to enhance ‘adaptability’**
- **Strengthen WHO-government-academic partnerships**
- **Long term investment in strengthening national capacity for evidence informed decision-making is critical**
- **Implementation failure is the norm – adding effective, but unfeasible and unaffordable interventions to overburdened health systems is likely losing not saving lives**

Thanks

This project is part of the EDCTP2 programme supported by the European Union



Tel: + 27 21 938 0508

Email: gela@mrc.ac.za

Facebook: [Global Evidence Local Adaptation](#)

YouTube: [@GELAchild](#)

X: [@CochraneAfrica](#)

